



EXPANDING PLATFORM EFFECTIVENESS

AUGMENT + ENHANCE MULTI-MISSION EFFECTIVENESS WITH
**LONG DWELL, LONG RANGE
MARITIME DOMAIN AWARENESS**



Long Dwell Surveillance Technology

SeaPicket®

Fixed Acoustic Monitoring



Outpost®

Towed Acoustic Monitoring



TransparenSea®

Command, Control, & Data Processing



Autonomous detection, classification, & reporting

- Linear sonar arrays optimize data collection
- Onboard digital signal processing and data management system classifies and reports targets of interest
- Secure, real-time reporting to shore
- Detects & localizes contacts at extended ranges
- Mission tailorable
- Scalable coverage
- Advanced acoustic analysis and data processing ashore

Long Range Acoustic Sensing - Simplified

ACOUSTIC AND VISUAL SENSORS

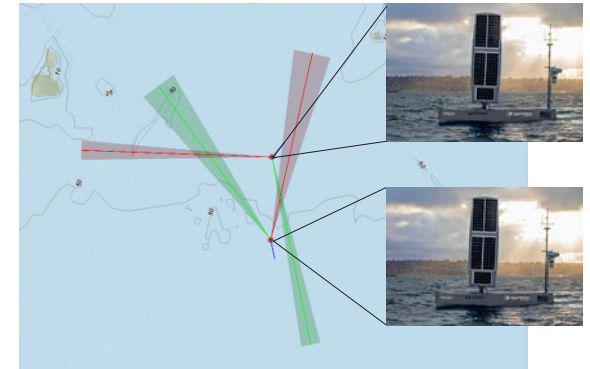
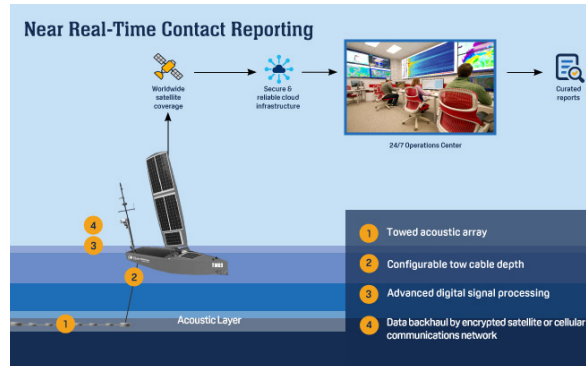
- Monitor using autonomous sensor systems
- Acoustic sensors include
 - Bottom-Mounted Passive Acoustic Array
 - Towed Passive Acoustic Array
- Visual sensors include
 - Electro-optical Camera
 - Infrared Camera

MONITORING SERVICES

- Detect and classify contacts in all environmental conditions
- Processing and analysis localizes targets of interest
- Receive curated contact reports in near-real-time
- Meets US Navy deep water passive top level requirements

BETTER DECISIONS

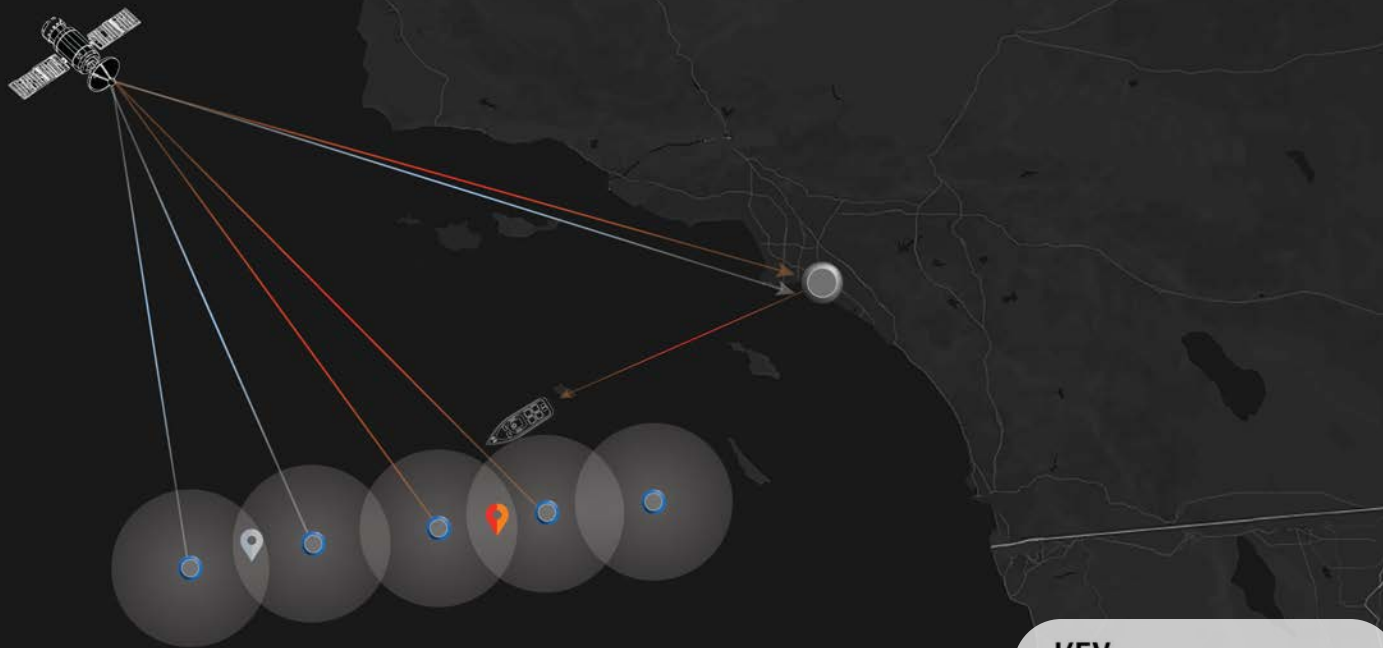
- Increased sensing and decreased uncertainty enables clear and consistent decisions
- Delivers persistent surveillance presence that augments manned assets
- Mitigates lack of capacity due to force generation shortfalls



Localization from two intersecting cross-bearing detections - Area of Probability

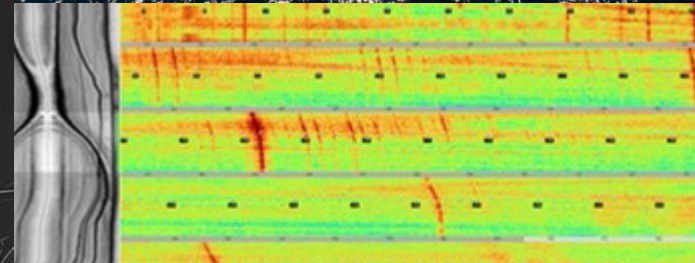
Maritime Border Security

- Augment operational presence with rapidly scalable uncrewed systems
- Fill the national domain awareness gap without the man, train, and equip cost
- Enable efficient use of manned multi-mission assets



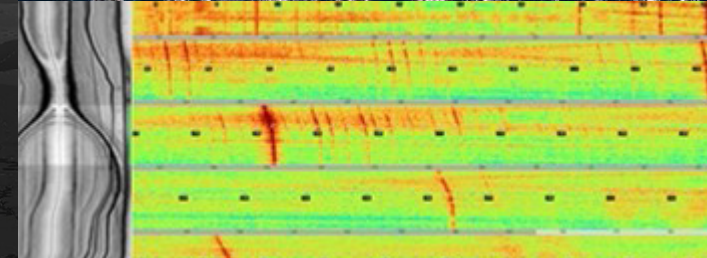
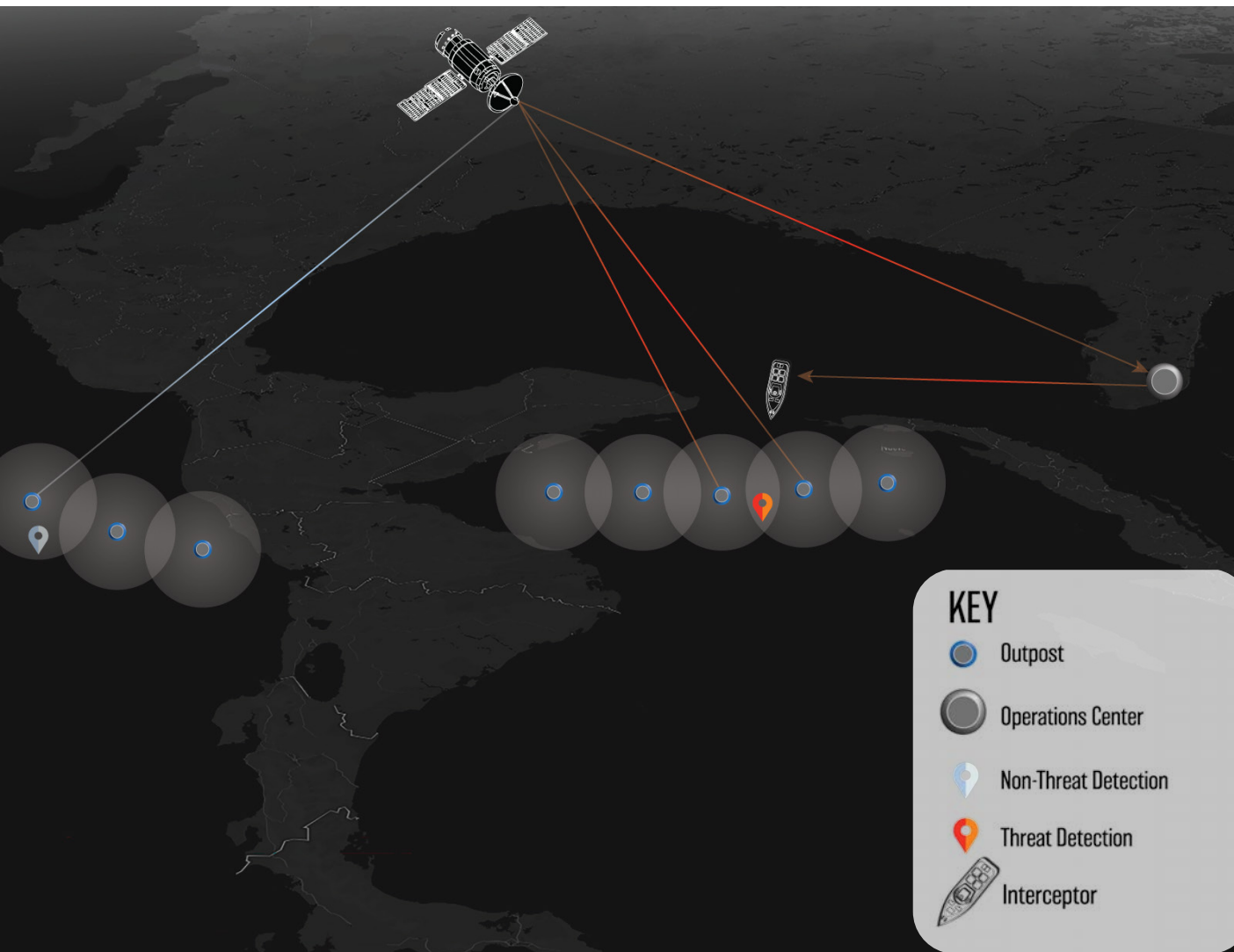
KEY

-  Outpost
-  Operations Center
-  Non-Threat Detection
-  Threat Detection
-  Interceptor



Drug Interdiction

- Scalable unmanned force packages amplify interdiction asset reach
- Detect targets of interest in vast and open ocean environments
- Share information with interagency, DoD, and international partners



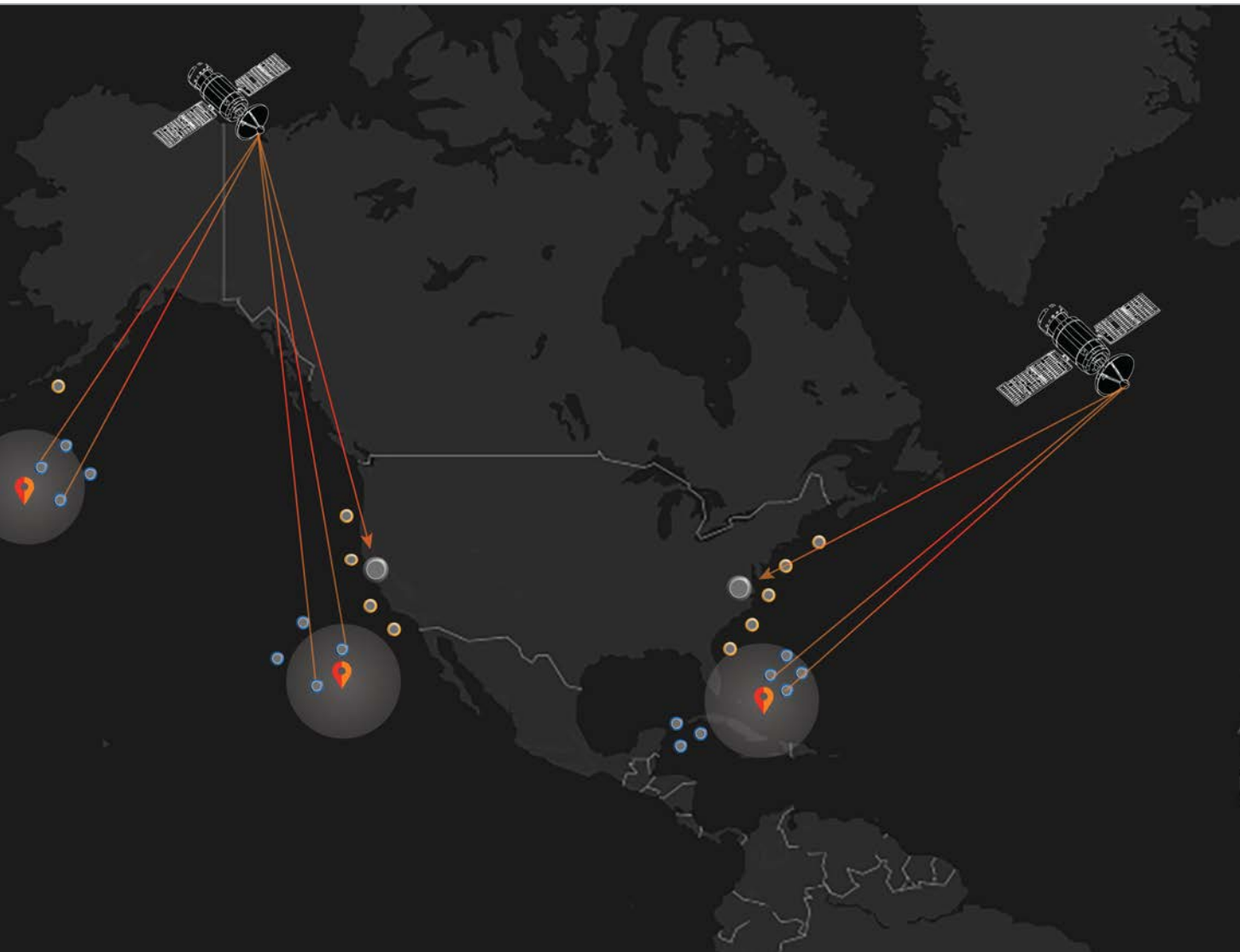
Courtesy of the U.S. Customs and Border Protection



Restore Maritime Dominance, Now

BUILD UNCREWED SURFACE VESSELS:

- Augment the Cutter fleet with scalable, contractor-operated unmanned vessels
- Realize rapid rate of delivery from non-traditional shipbuilders
- Acquire vessels for less than 1% of the cost of an Offshore Patrol Cutter



^ Build time: 3 Months



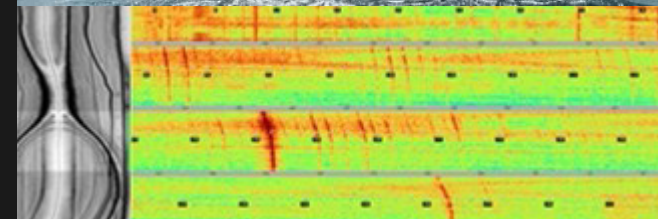
^ Build time: 3 Years

- SeaPicket Systems
- Outpost Systems
- Exquisite Capital Asset or Operational Centers
- Detected Threat

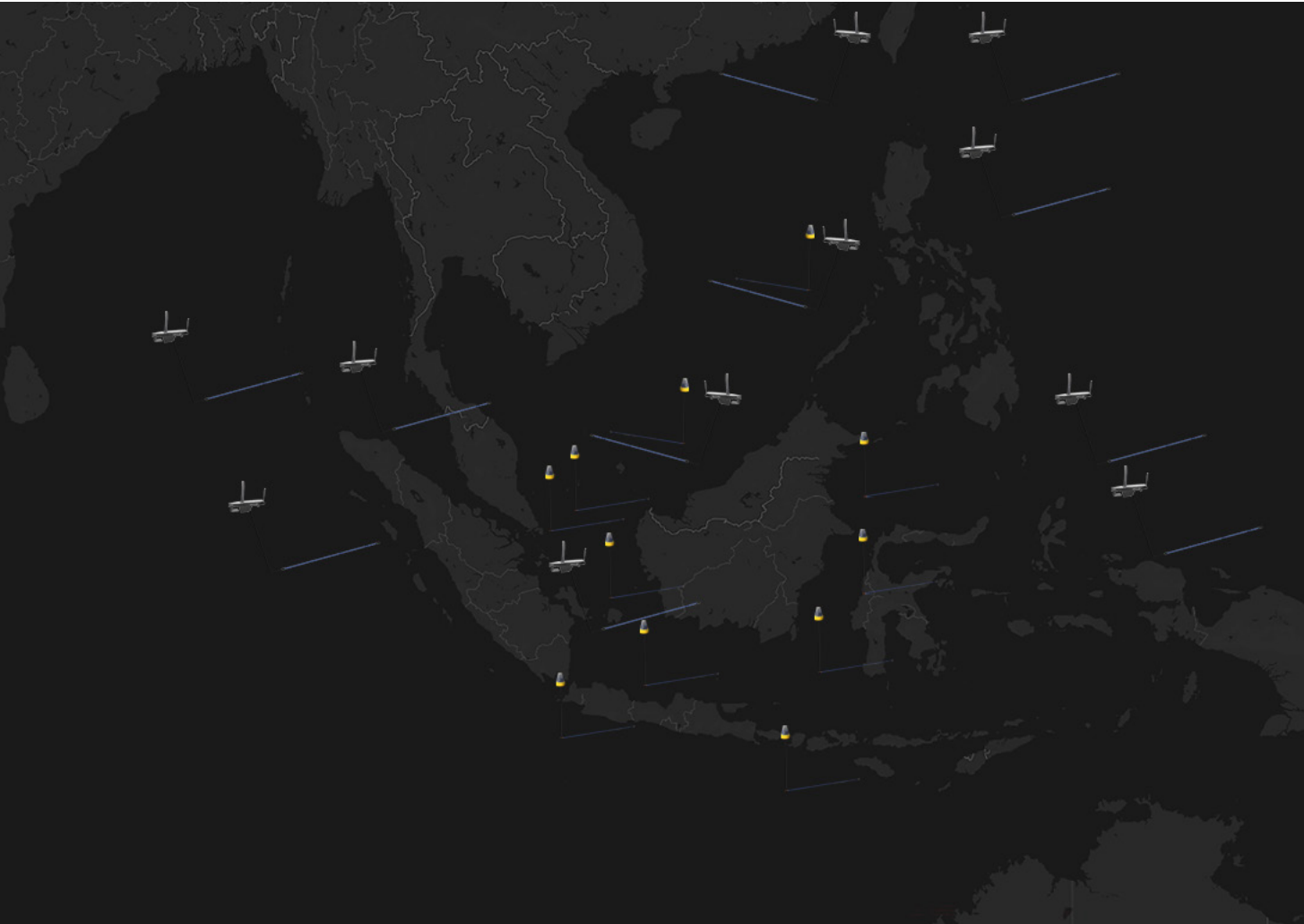
Law Enforcement-Led Combined Maritime Forces

COMBAT GRAY ZONE TACTICS:

- Monitor maritime militia vessels
- Counter illegal fishing activities
- Sustain the rule of law in the Indo-Pacific



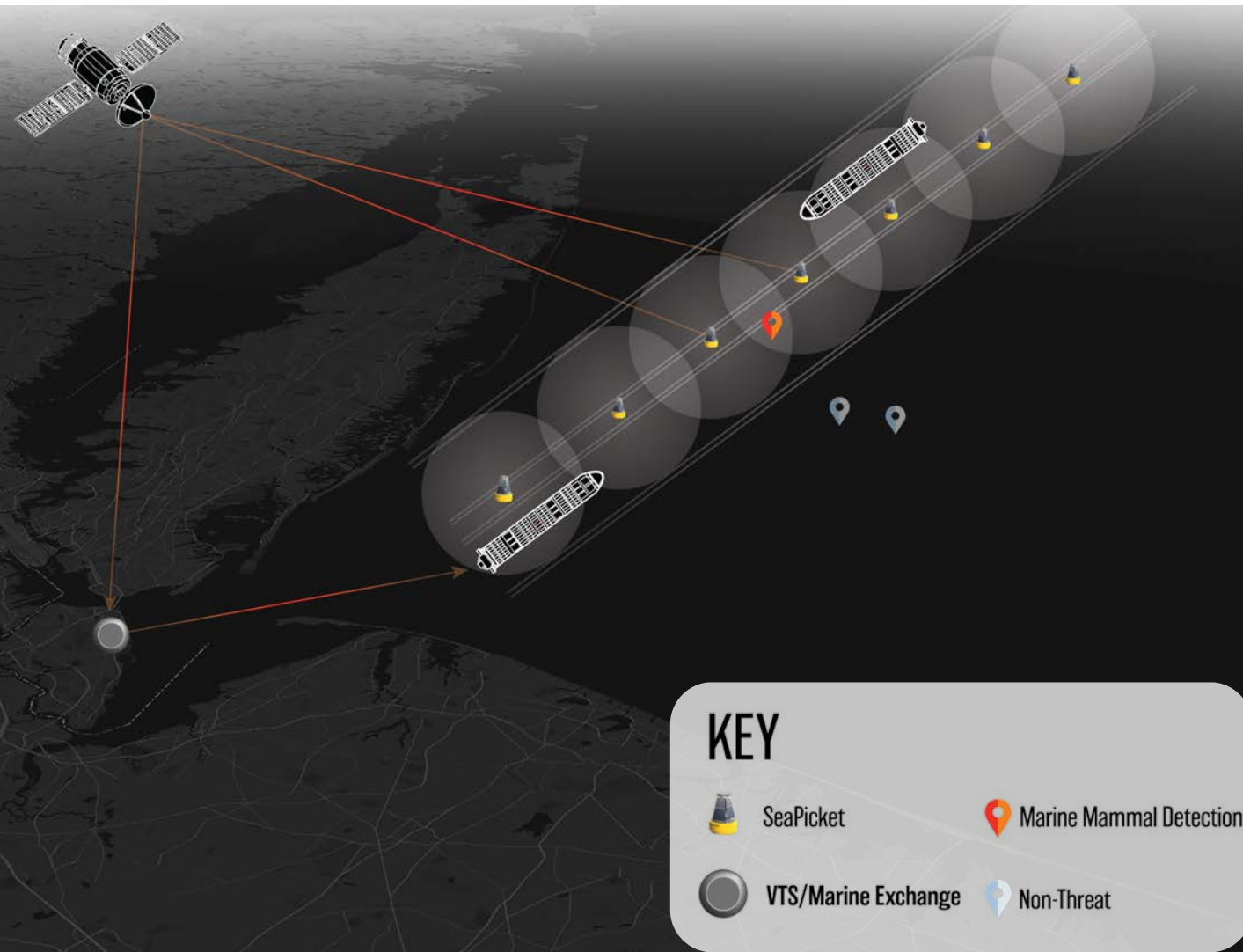
Courtesy of the U.S. Coast Guard



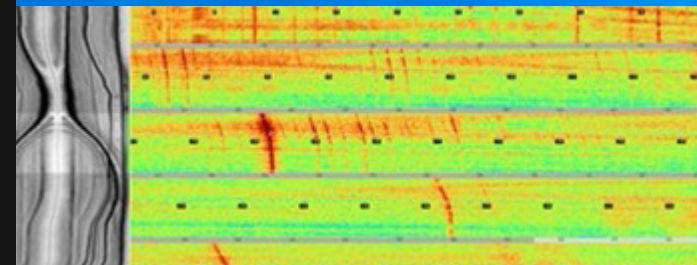
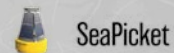
Coastal Maritime Domain Awareness

SMART VESSEL TRANSIT SYSTEMS:

- Increase port velocity without adding infrastructure or labor
- Decrease demand for Marine Mammal Protection Act enforcement
- Leverage private investment to create undersea domain awareness



KEY



**HEADQUARTERS:**

ThayerMahan, Inc.
120B Leonard Drive
Groton, CT 06340
T. 860-785-9994

WASHINGTON DC OFFICE:

4501 N. Fairfax Drive, Suite 302
Arlington, VA 22203

GENERAL INQUIRIES:

(860) 785-9994 | sales@thayermahan.com



CONNECT
DIRECTLY WITH OUR
SALES
DEPARTMENT



www.ThayerMahan.com